



KATSUYAMA

KATSUYAMA FINETECH (THAILAND) Co.,Ltd.

カツヤマファインテックタイランド



ADDRESS



54 Moo 9 Tambon Thano Ampur Utai
Pranakornsriayutthaya 13210 Rojana Industrial
Tel : (035) 226-300-2 , (035) 331-539-41
Fax : (035) 330939



Company

Capital (資本金)	200,000,000 Baht
Shareholders (出資者構成)	Katsuyama Finetech Co.,Ltd. (日本) 100%
Board of Directors (役員構成)	Chairman (会長) : Mr.Soichi Katsuyama (勝山宗一) Managing Director (社長) : Mr.Yujiro Ota (太田雄二郎) Director (取締役) : Mr.Daisuke Suzuki (鈴木大輔)
Establishment (会社設立)	July-1995 Approved by the Ministry of Commerce (商務省認可)
BOI Approval (BOI 認可)	December-1995
Certified (ISO 認証)	IATF 16949:2016, ISO 9001:2015, ISO 14001:2015 Certified by LLOYD'S (LLOYD'S 認証)
Land Area (敷地面積)	32,160 m ² (約 10,000 坪)
Factory 1 Building Area (第 1 工場)	6,695 m ² (約 2,000 坪)
Factory 2 Building Area (第 2 工場)	1,640 m ² (約 500 坪)
Factory 3 Building Area (第 3 工場)Tooling	896 m ² (約 300 坪)
Factory 4 Building Area (第 4 工場)Mold Die	1,928 m ² (約 600 坪)
Canteen Area (食堂)	500 m ² (約 150 坪)
Warehouse Area (出荷倉庫)	2,133 m ² (約 650 坪)
Number of Employees(従業員数)	Thai Staff (現地従業員) : 450 people Japanese (常駐日本人) : 3 people
Scope of Business (事業内容)	Manufacturing seat belt parts for automobiles (自動車用シートベルト部品製造) Manufacturing steering column parts for automobiles (自動車用ステアリングコラム部品製造) Cation Electro Deposit Painting (カチオン電着塗装請負加工)

Tool Support Machine

Wirecut Electrical Discharge Machine	(ワイヤーカット放電加工機)	SODICK	5
Die Sinking Electric Discharge Machine	(型彫り放電加工機)	SODICK	1
Forming Grinding Machine	(成型研削盤)	OKAMOTO	2
Surface Grinding Machine	(平面研削盤)	OKAMOTO	2
Milling Machine	(フライス盤)	SHIZUOKA	2
Machining Center	(マシニングセンタ)	MAKINO	2
Lathe	(旋盤)	AMADA	1
Upright Drilling Machine	(直立ボール盤)	KIRA	1
Band Saw	(コンタマシーン)	LUXO	1
Laser Beam Machine	(レーザー加工機)	GRAND MASTER	1



Inspection Equipment

Coordinate Measuring Machine	(3次元測定器)	MITUTOYO	3
Vision Measuring Machine	(画像測定器)	ARCS/O-DETECT	2
Tensile Strength Test Machine	(引張試験機)	SHIMADZU	2
Salt Spray Test Machine	(塩水噴霧試験機)	CY	1
Rockwell Hardness Testing Machine	(ロックウェル硬度計)	MITUTOYO	2
Micro Vickers Testing Machine	(マイクロビッカース硬度形)	AKASHI	1
Micro Scope	(デジタル顕微鏡)	NIKON	1
Contracter	(形状測定器)	MITUTOYO	1



Production

500ton Progress Press Machine	(500 トン順送プレス)	AIDA	2
400ton Progress Press Machine	(400 トン順送プレス)	AIDA	2
300ton Progress Press Machine	(300 トン順送プレス)	AIDA	1
200ton Progress Servo Press Machine	(200 トン順送サーボプレス)	KOMATSU	2
200ton Progress Press Machine	(200 トン順送プレス)	AIDA	2
150ton Progress Press Machine	(150 トン順送プレス)	AIDA	1



110ton Single Press Machine	(110 トン単発プレス)	AIDA	2
80ton Single Press Machine	(80 トン単発プレス)	AIDA	6
80ton Single Press Machine	(80 トン単発プレス)	FONYU	1
60ton Single Press Machine	(60 トン単発プレス)	AIDA	1
45ton Single Press Machine	(45 トン単発プレス)	KOMATSU	3
45ton Single Press Machine	(45 トン単発プレス)	AIDA	1
45ton Single Press Machine	(45 トン単発プレス)	WASHINO	3
35ton Single Press Machine	(35 トン単発プレス)	AMADA	2
AC Resistance Welding Machine	(スポット溶接機)	PANASONIC	3
AC Resistance Welding Machine	(スポット溶接機)	NASTOA	1
AC Resistance Welding Machine	(スポット溶接機)	DAIDEN	1



Vibration Staking Machine	(バイブレーションカシメ機)	KATSUYAMA	7
Rivet Setter Machine	(リベットカシメ機)	FUKUI BYORA	3
Shot Blasting Machine	(ショットブラスト機)	SINTO	1
500L Vibratory Finishing Machine	(振動バレル研磨機)	THAI CRIPTON	7
1000L Vibratory Finishing Machine	(振動バレル研磨機)	THAI CRIPTON	2
150L Fluid Finishing Machine	(流動バレル研磨機)	THAI CRIPTON	2

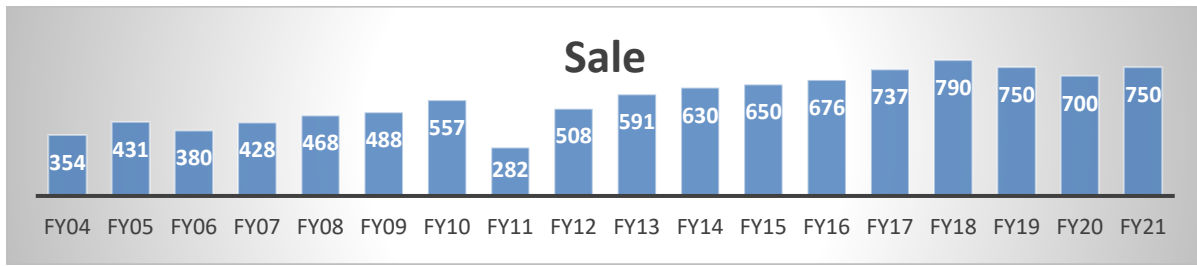


Cation Electra Deposit Painting Line	(カチオン電着塗装ライン)	PARKER ENGINEERING	1
Heat Treatment Furnace	(連続式焼入れ焼き戻し炉)	TOKYO GUSDENRO	1
100ton Injection Molding Machine	(100 トン縦型射出成型機)	JSW	1



Sale Record

Unit : mil.baht
 単位 : 百万パーツ



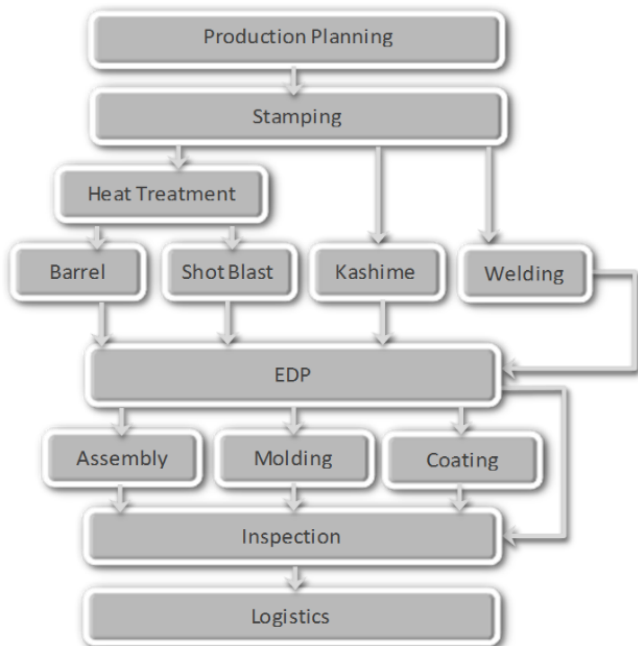
Main Customer



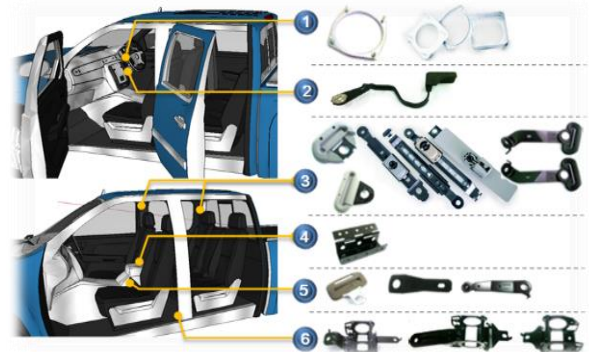
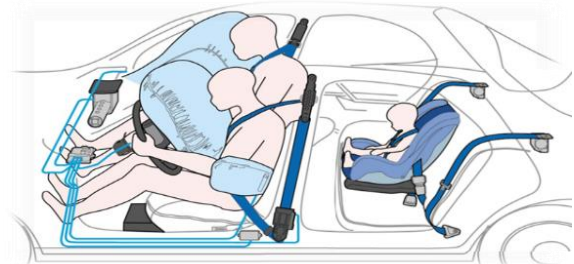
Water Flood (October 2011)



Process Chart



Sample Products



IATF 16949:2016
 ISO 9001:2015
 ISO 14001:2015 CERTIFIED

To be always reliable producer
 of safety parts for worldwide customers.